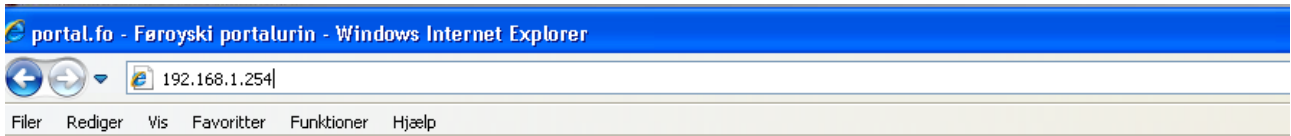


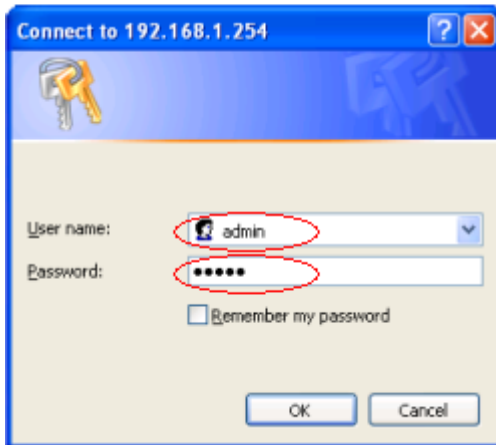
Opna **Internet Explorer** (ella annan kagara) og skriva **192.168.1.254** í adressuteigin.



Skriva **admin** í teigin Username/Brugernavn

og **admin** í teigin Password/Adgangskode

og trýst á OK



Nú er komið inn í mótaldið/routaran.

Vel **Quick Start**

Broyt Encapsulation til **PPPoA**

Set VPI til at vera: **1**

Set VCI til at vera: **47**

Skriva síðani **Username** og **Password** (hetta stendur á ordraváttanini sum tú fekk sendandi frá Føroya Tele, tá tú stovnaði breiðbandið).

Legg til merkis at Username **SKAL** skrivast við smáum stavum.

Trýst síðani á **Apply**.

Status	
Quick Start	
Configuration	
LAN	
WAN	
System	
Firewall	
VoIP	
QoS	
Virtual Server	
Time Schedule	
Advanced	
Static Route	
Dynamic DNS	
Check Email	
Device Management	
IGMP	
VLAN Bridge	
Save Config to FLASH	

Quick Start	
Connection	
Encapsulation	PPPoA <input type="button" value="Auto Scan"/>
VPI	1
VCI	47
NAT	<input checked="" type="radio"/> Enable <input type="radio"/> Disable
Optional Settings	
IP Address	0.0.0.0 <small>('0.0.0.0' means 'Obtain an IP address automatically')</small>
Subnet Mask	0.0.0.0
Default Gateway	
DNS	
Obtain DNS automatically	<input checked="" type="checkbox"/> Enable
Primary DNS	
Secondary DNS	
PPP	
Username	dsl1234567
Password	••••••
<input type="button" value="Apply"/>	<input type="button" value="Cancel"/>

Far síðani inn á Configuration -> LAN -> Wireless.

Gev tráðleysa sambandinum eitt navn í **ESSID**. Í hesum døminum hava vit brúkt ForoyaTele2042.

Vel **Enable** í ESSID Broadcast.

Vel **Europe** í Regulation Domain.

WDS Service skal vera **Disable**.

Trýst síðani á **Apply**.

The image shows a network configuration interface. On the left is a sidebar with menu items: Status, Quick Start, Configuration, LAN, Bridge Interface, Ethernet, IP Alias, Ethernet Client Filter, Wireless, Wireless Security, Wireless Client Filter, Port Setting, DHCP Server, WAN, System, Firewall, VoIP, QoS, Virtual Server, Time Schedule, and Advanced. The 'Configuration', 'LAN', and 'Wireless' items are circled in red. The main panel is titled 'Wireless' and contains the following settings:

Parameters	
WLAN Service	<input checked="" type="radio"/> Enable <input type="radio"/> Disable
Mode	802.11b + g
ESSID	ForoyaTele2042
ESSID Broadcast	<input checked="" type="radio"/> Enable <input type="radio"/> Disable
Regulation Domain	Europe
Channel ID	Channel 1 (2.412 GHz) Scan C
Tx PowerLevel	180 (0 ~ 255)
Connected	true
AP MAC address	00:0e:2e:bc:87:32
AP Firmware Version	1.1.2.0
Wireless Distribution System (WDS)	
WDS Service	<input type="radio"/> Enable <input checked="" type="radio"/> Disable
1.Peer WDS MAC address	00:00:00:00:00:00
2.Peer WDS MAC address	00:00:00:00:00:00
3.Peer WDS MAC address	00:00:00:00:00:00
4.Peer WDS MAC address	00:00:00:00:00:00

** WDS depends on the settings of main security encryption type. **

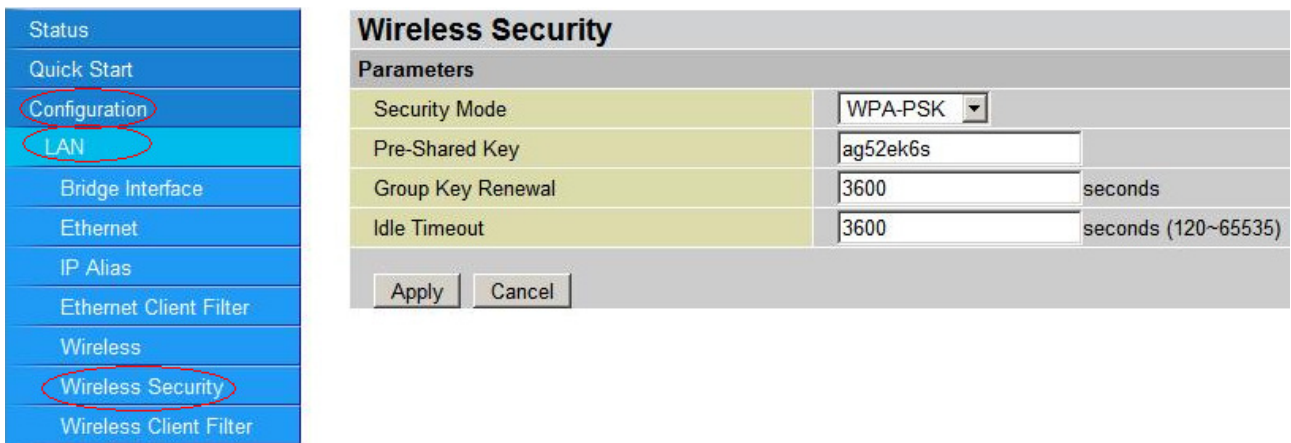
Buttons: Apply, Cancel

Far síðani inn á **Wireless Security**.

Security Mode skal broytast til **WPA-PSK**.

Skriva eitt sjálfvalt loyniorð í **Pre-Shared Key**. Loyniorðið skal í minsta lagi vera 8 stavar og í mesta lagi 64 (*Minst til hetta loyniorð, tí hetta skal nýtast á teimum teldum, sum skulu knýtast til tráðleysa sambandið*).

Trýst á **Apply**.



Wireless Security	
Parameters	
Security Mode	WPA-PSK
Pre-Shared Key	ag52ek6s
Group Key Renewal	3600 seconds
Idle Timeout	3600 seconds (120~65535)

Trýst síðani á **Save Config** niðast á síðuni.



SAVE CONFIG RESTART LOGOUT

VoIP/802.11g ADSL2+ Fi... 11.29 friggjadagur

Nú er beinarin uppsettur og klárur at taka í nýtslu.

