

# Vegleiðing

## Uppseting ZTE MF681

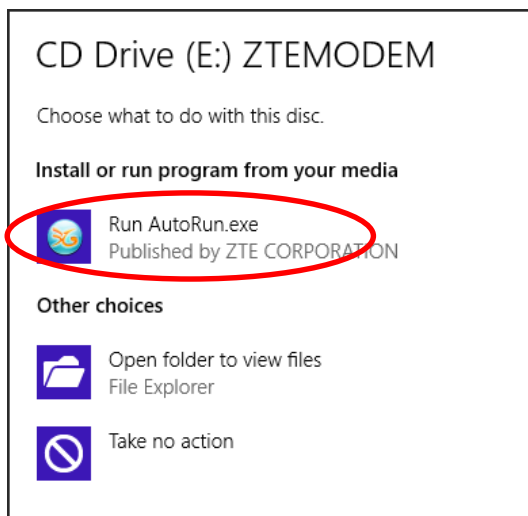
ZTE MF681 skal uppsetast, fyri at kunna knýta seg í Føroya Tele 3G netið.

Við at fylgja hesi vegleiðing, verður móttaldið rætt uppsett til 3G netið.

Set SIM-kortið í móttaldið.



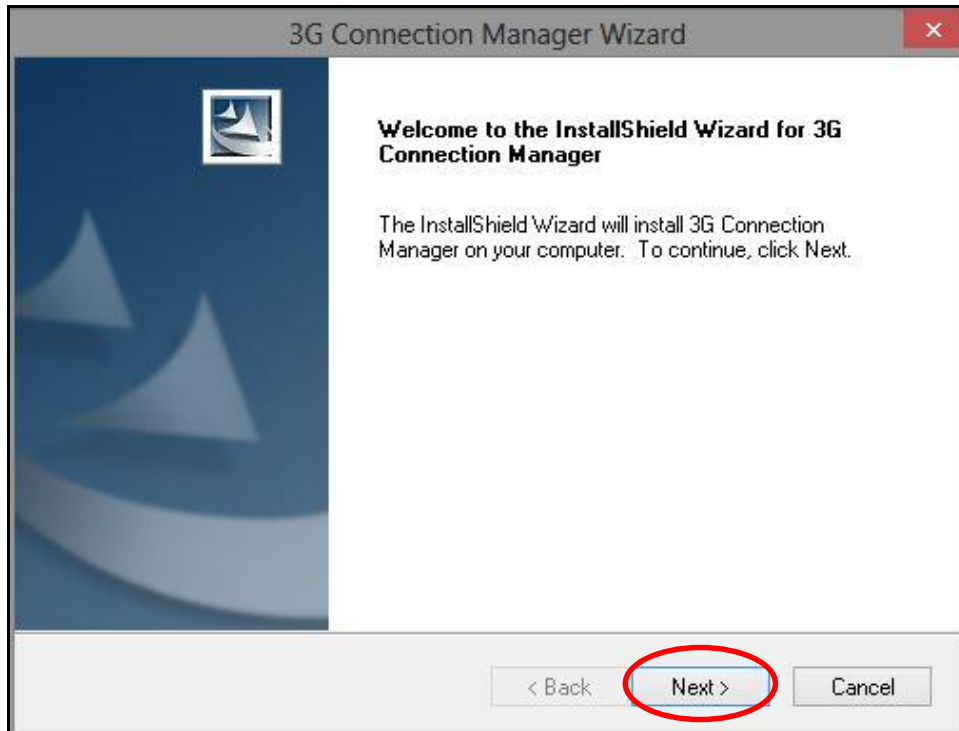
Eftir at hava sett móttaldið til telduna, trýst á “Run AutoRun.exe”



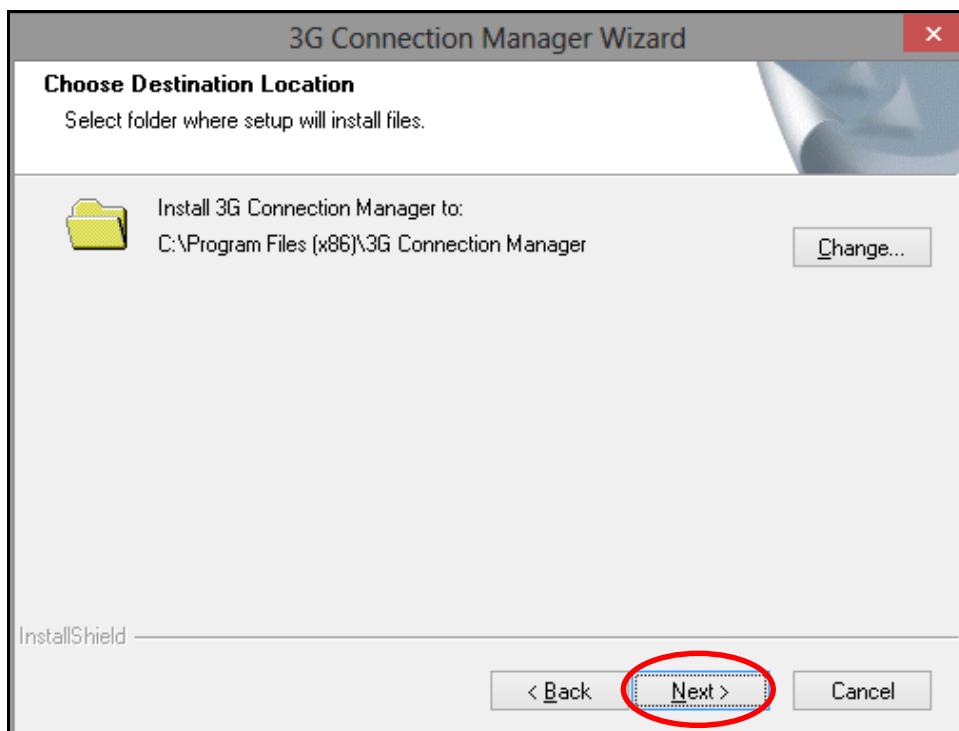
# Vegleiðing

## Uppseting ZTE MF681

Trýst síðani á “Next”



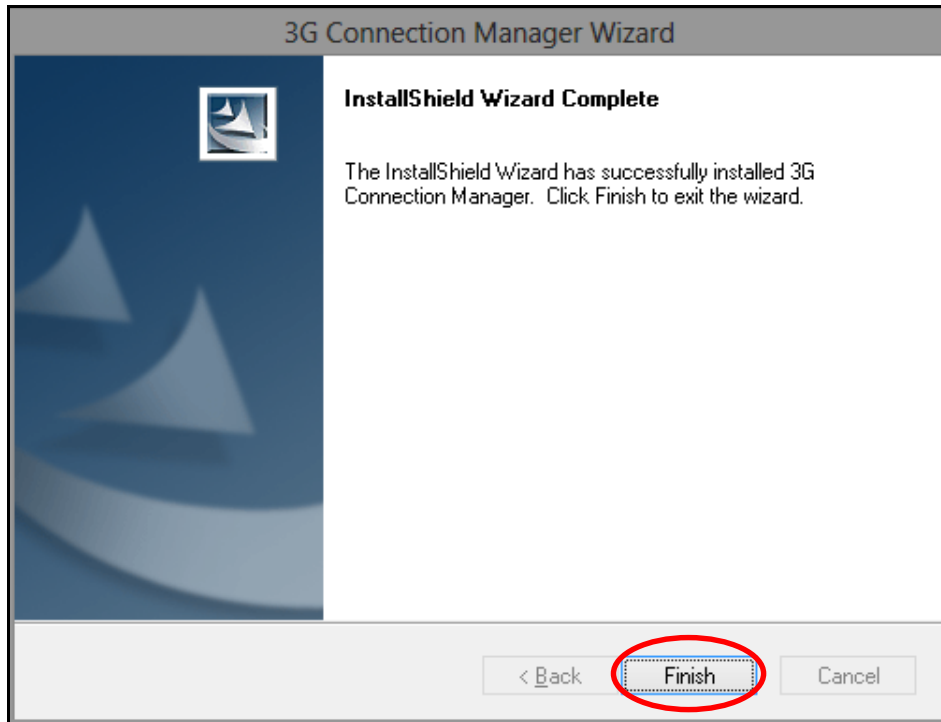
Trýst aftur á “Next”



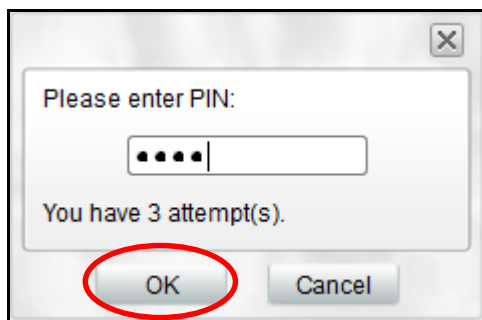
# Vegleiðing

## Uppseting ZTE MF681

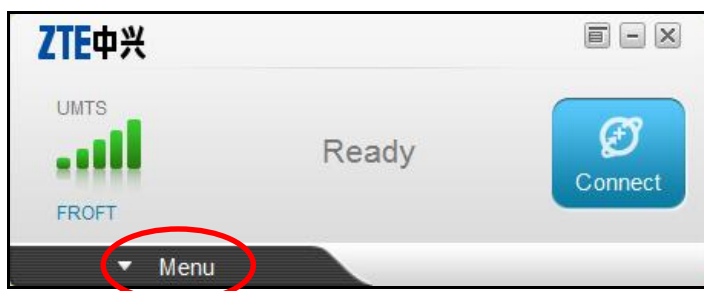
Trýst á "Finish"



Skriva PIN-koduna og trýst á "OK"



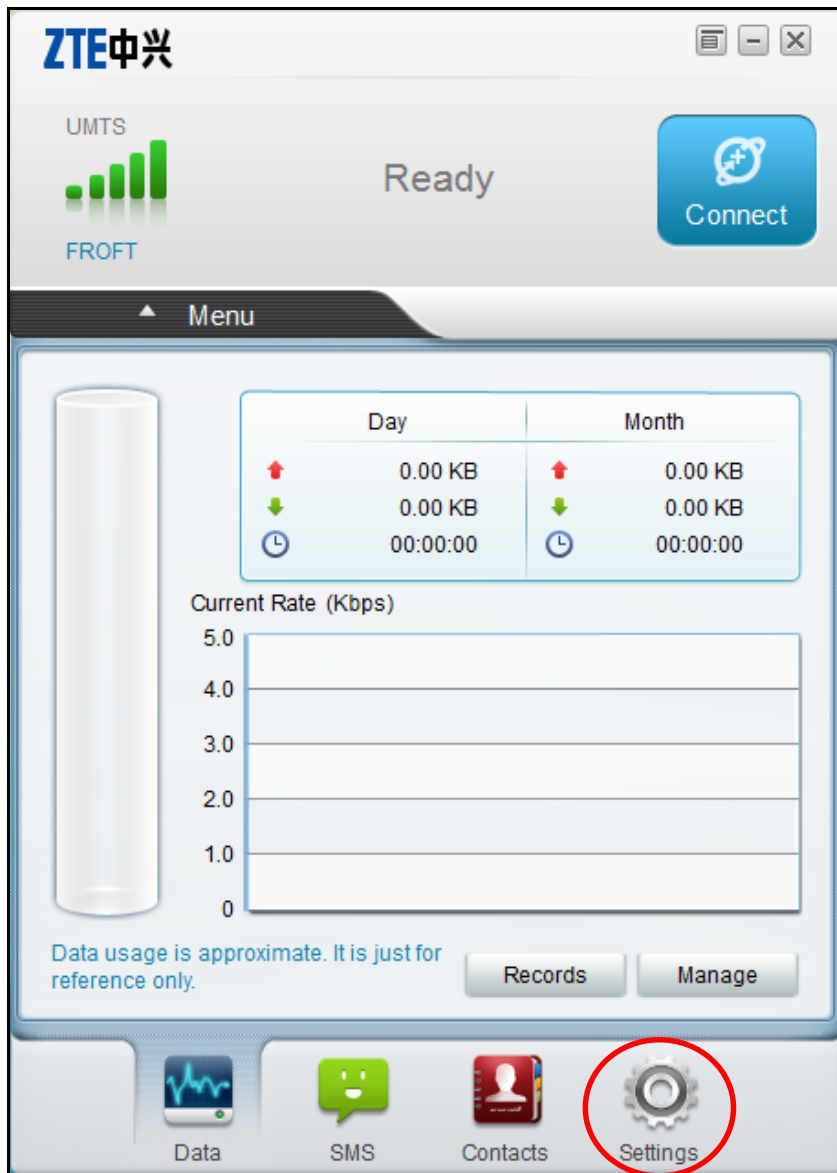
Trýst á "Menu"



# Vegleiðing

## Uppseting ZTE MF681

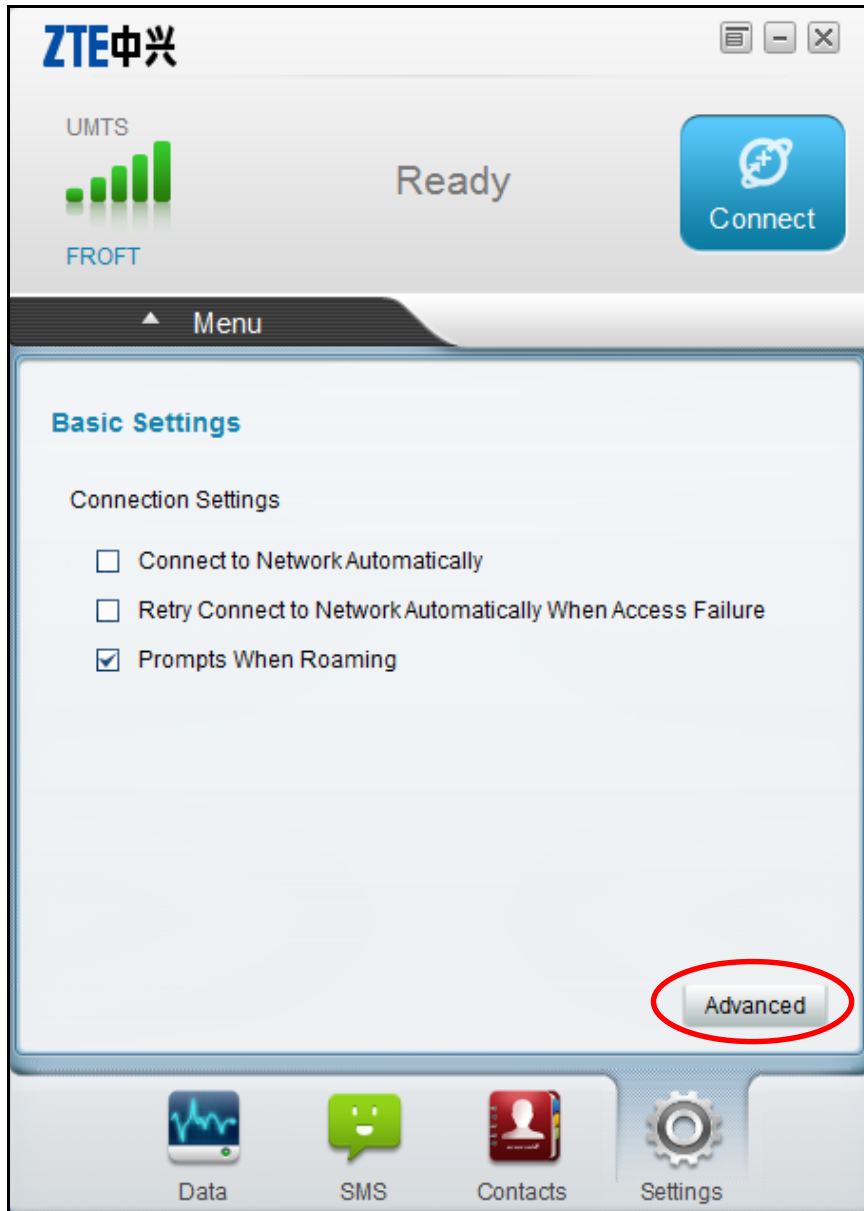
Trýst á "Settings"



# Vegleiðing

## Uppseting ZTE MF681

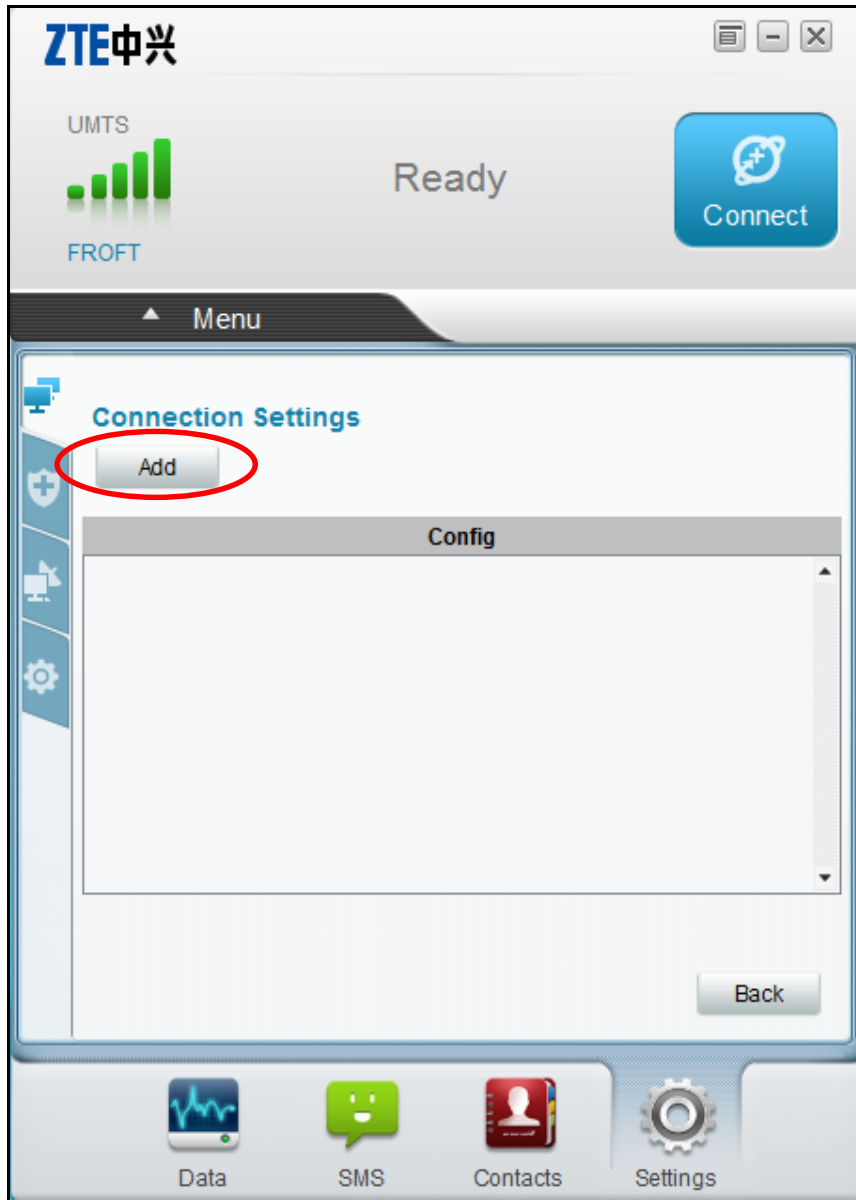
Trýst á “Advanced”



# Vegleiðing

## Uppseting ZTE MF681

Trýst á "Add"



# Vegleiðing

## Uppseting ZTE MF681

Fyll teigarnar út sum víst niðanfyri og trýst á "Save"

The screenshot shows the 'New Access Point' configuration screen on a ZTE MF681 device. The screen is titled 'New Access Point' and has a 'Menu' button at the top left. The status bar at the top shows 'Ready' and a 'Connect' button. The configuration fields are as follows:

- Profile Name: 3G Internet
- APN: internet
- Authentication mode:  Static (circled in red),  Dynamic
- Authentication mode:  PAP,  CHAP
- User Name: internet
- Password: masked with dots

At the bottom of the screen, there are two buttons: 'Save' (circled in red) and 'Back'. The bottom dock contains icons for Data, SMS, Contacts, and Settings.

Skriva eitt sjálvvalt profílnavn.  
T.d. "3G Internet"

Vel "Static" og skriva "internet"  
í APN

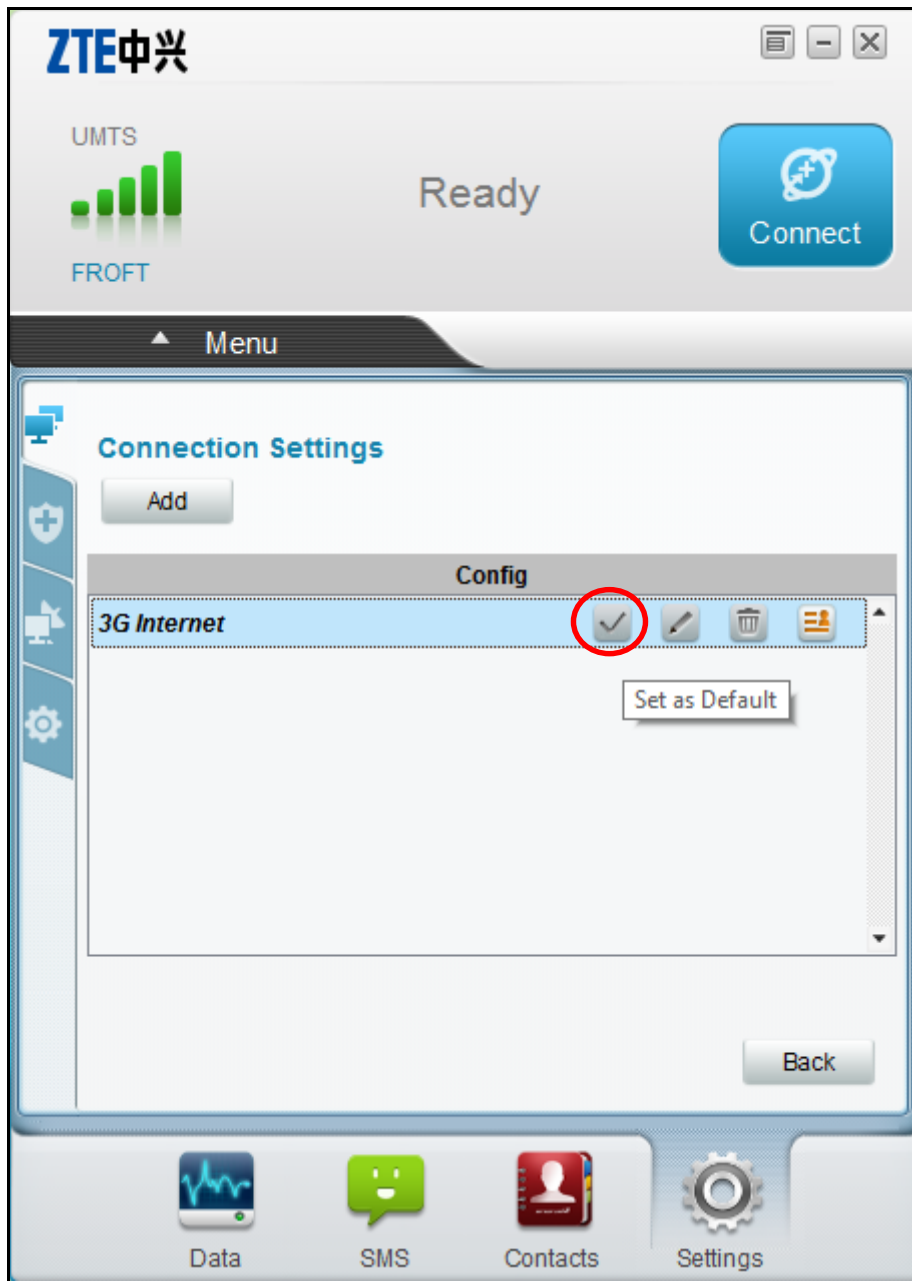
Skriva "internet" í User Name

Skriva "internet" í Password

# Vegleiðing

## Uppseting ZTE MF681

Vel profilin tú hefur gjørt, í hesum førum "3G Internet", trýst síðani í flugubeini "Set as Default"

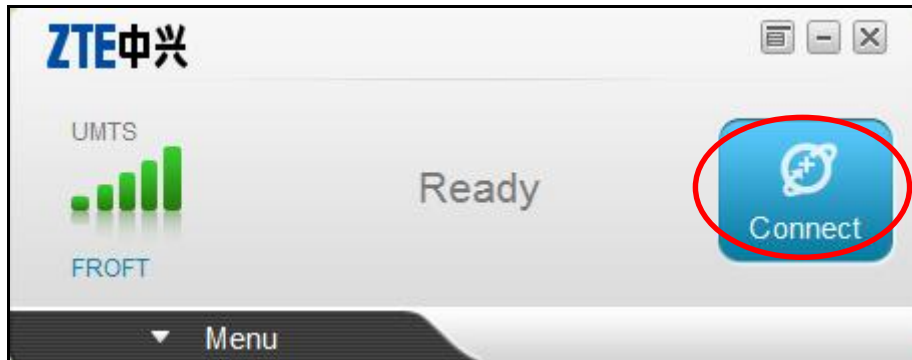




# Vegleiðing

## Uppseting ZTE MF681

Trýst á "Connect" fyri at fáa internet samband



Trýst á "Disconnect" um tú vil avbróta sambandið.

