

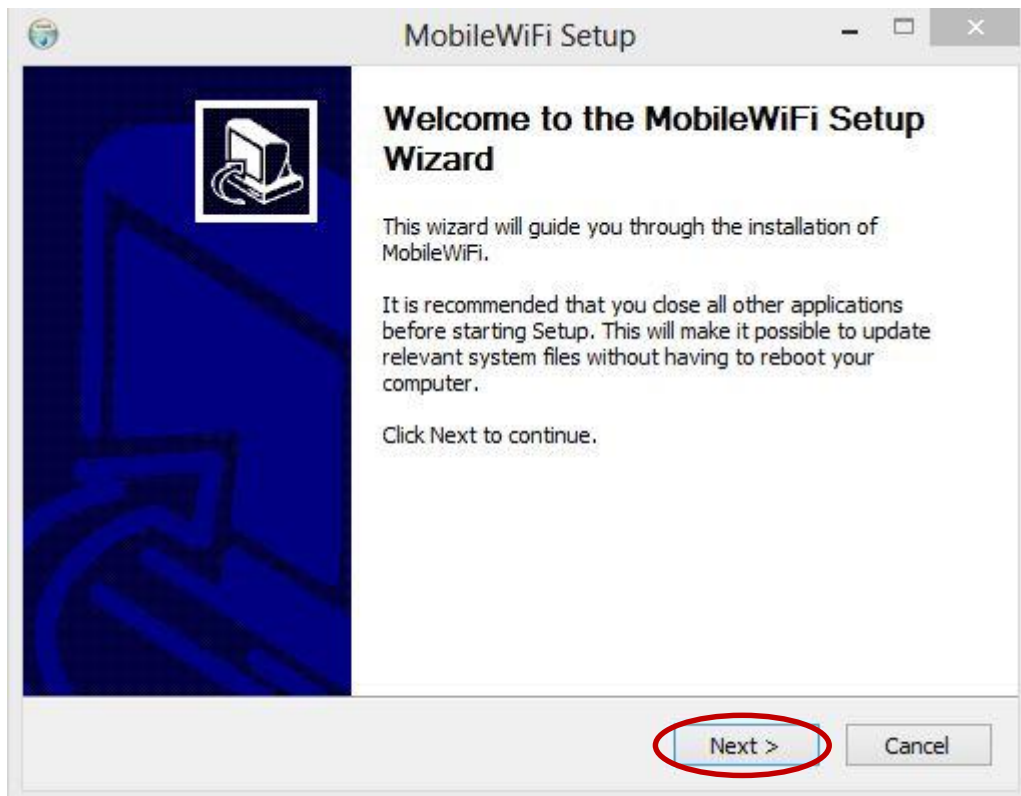
Uppseting av HUAWEI E5372 3G/4G-LTE

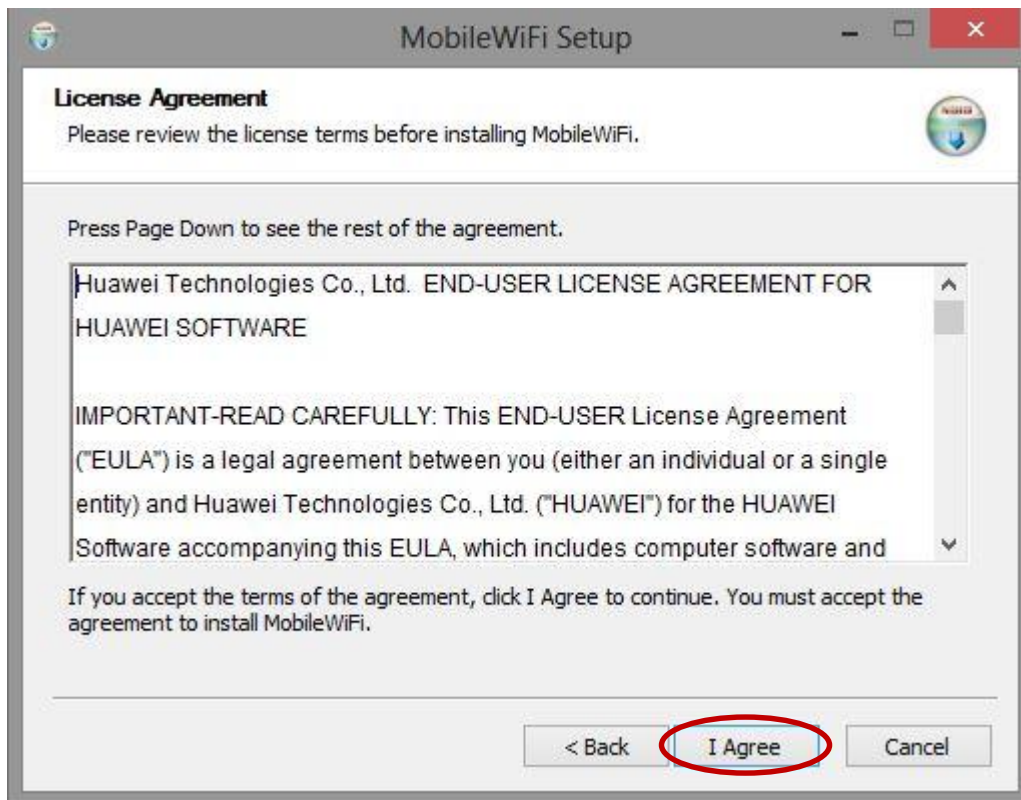
Huawei E5372 3G/4G-LTE skal uppsetast, fyri at kunna knýta seg i Føroya Tele 3G Netid. Við at fylgja hesi vegleiðing, verður móttaldið rætt uppsett til 3G netið.



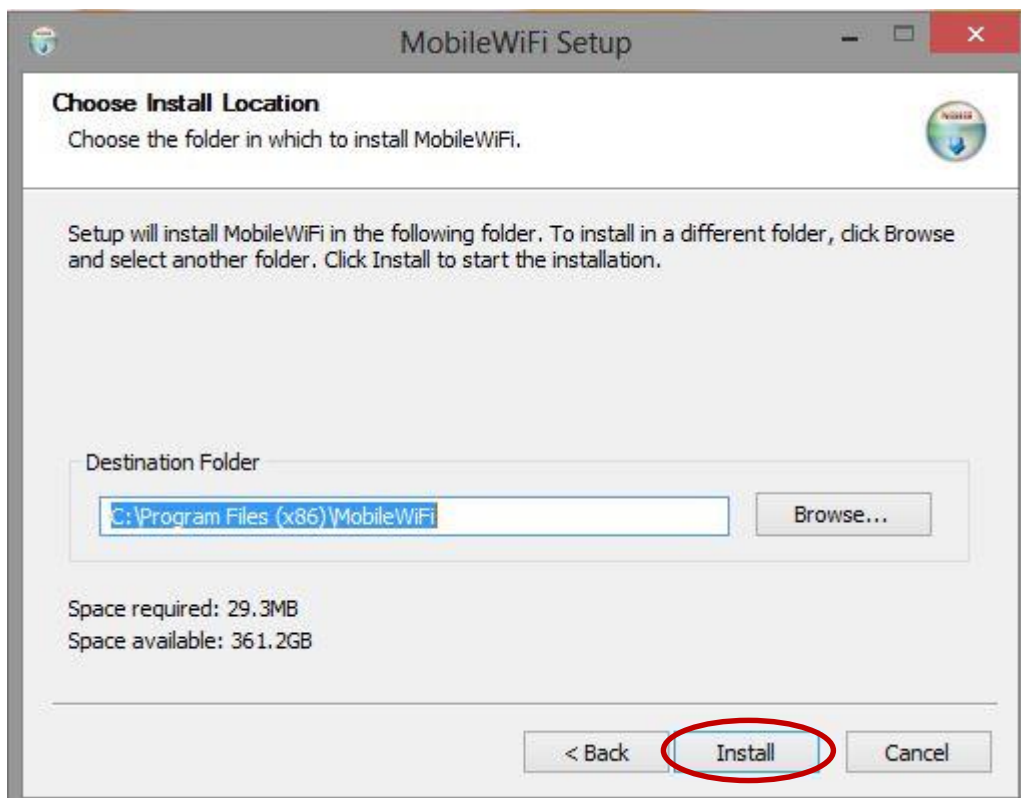
Eftir at USB leiðingurin er settur til telduna, startar uppsetingin sjálvvirkandi. Um uppsetingin ikki byrjar sjálvvirkandi, far inn á “Denne Computer” og tví klikka á **MobilWifi**

Trýst á **Next**

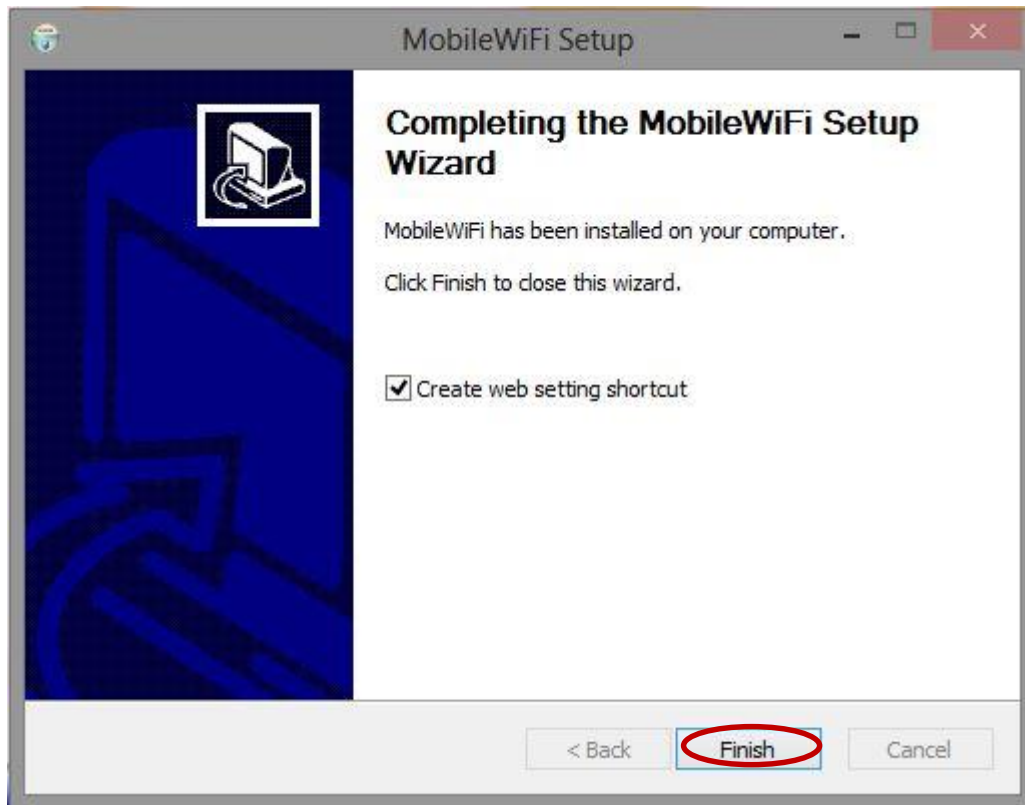




Trýst á I Agree



Trýst á **Install**



Trýst á **Finish**



Tví klikka á **MobileWiFi**, sum liggur á skrivborðinum.



Trýst á **Connection Settings**

Log In

User name:
admin

Password:
.....

Log In Cancel

Skriðu *admin* í “User name” og í “Password” og trýst á **Log in**

Note

The strength of your login password is too low. Please change the password to avoid potential security issues.

Do not remind

Confirm Cancel

Trýst á **Confirm**



Mobile Connection

Mobile Connection:

Mobile Network Turn Off

When the mobile network is turned on, the device connects to the network automatically.

Data roaming: Enable Disable

Max. idle time (s):

Apply

Trýst á Quick Setup



Welcome to The Quick Setup Wizard

Step 1 of 4

This wizard will show you how to configure your device safely.



Trýst á Next



Configure Profile Settings

Step 2 of 4

Profile name: Profile Management

User name:

Password:

APN: Static Dynamic



Trýst á Profile Management

- Quick Setup
- Dial-up
- Mobile Connection
- Profile Management**
- Network Settings
- Internet WLAN
- WLAN
- Security
- System

Profile Management

Profile name:

User name:

Password:

APN:

Trýst á **New Profile**

Skriva *FT* "Profile" og *internet* í "APN" og trýst á **Save**

New Profile

Profile name:

User name:

Password:

APN: Static Dynamic

- Quick Setup
- Dial-up
- Mobile Connection**
- Profile Management
- Network Settings
- Internet WLAN
- WLAN**
- Security
- System

Mobile Connection

Mobile Connection:

Mobile Network

When the mobile network is turned on, the device connects to the network automatically.

Data roaming: Enable Disable

Max. idle time (s):

Trýst á **WLAN**

Quick Setup
Dial-up
Internet WLAN
WLAN
→ WLAN Basic Settings
WLAN Advanced Settings
WLAN MAC Filter
DHCP
Security
System

WLAN Basic Settings

If the encryption mode is set to WEP or TKIP, a wireless network adapter working in only 802.11n mode may not be able to access the device.

SSID: FT-1001

802.11 authentication: WPA/WPA2-PSK

Encryption mode: AES+TKIP

WPA pre-shared key:

Show password

SSID Broadcast: Enable Disable

Apply

Innset eitt sjálvvalt trádleyt navn í “SSID” og eitt sjálvvalt trádleyt loyniorð í “WPA pre-shared key”. Trýst á **Apply**.

Uppsetingin er nú liðug og tú kanst nú binda tína trádleyt útgerð til Huawei Mobil WiFi.