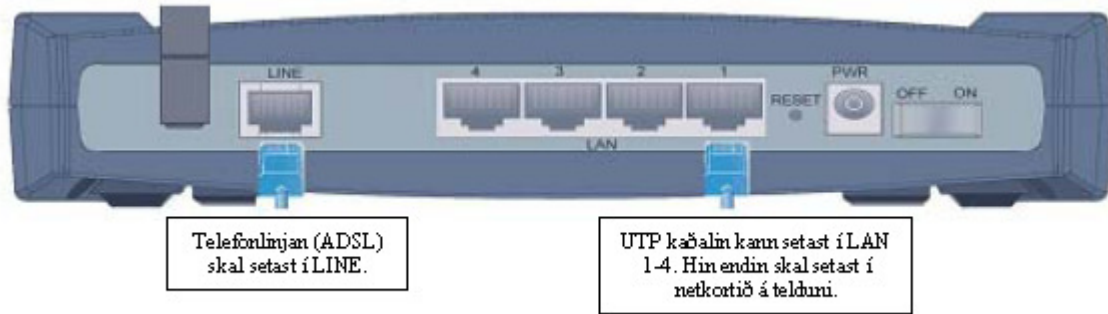
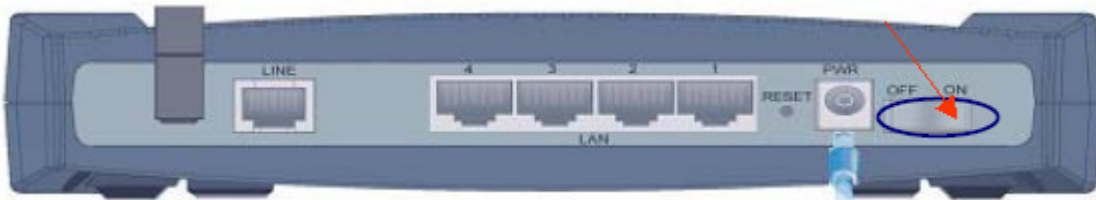


# Vegleiðing til Billion BiPAC 5102

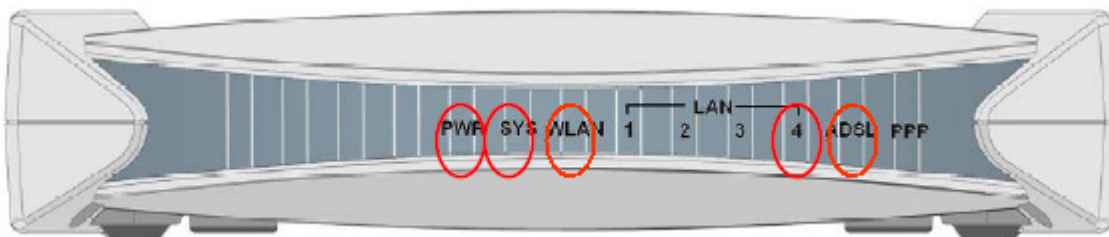
Set móttaldið til **telduna** og **ADSL-linjuna**.



Set streymstikkið í **PWR** og tendra (**ON**)



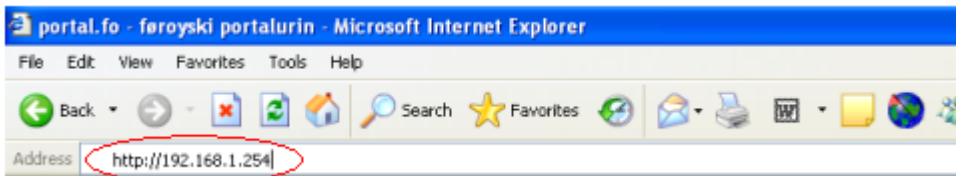
Tryggja tær, at **PWR, SYS, WLAN, ADSL** og **LAN-portrið** (nr. 1, 2, 3 ella 4) við UTP-kaðalinum lýsa.



Um alt lýsir, sum tað skal, kann uppsetingjin halda fram

Opna **Internet Explorer** (ella annan kagara), og skriva

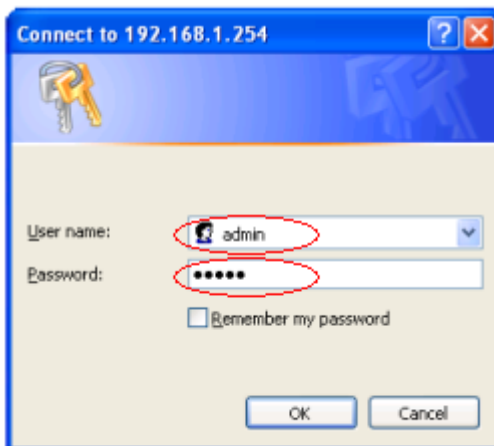
**http://192.168.1.254** í adressuteigin



Skriva **admin** í teigin: User name/Brugernavn

og **admin** í teigin Password/Adgangskode

og vel **OK**



Nú kemur tú inn á mótaldið/routaran

## Vel Quick Start

The screenshot shows the BILLION router web interface in Microsoft Internet Explorer. The browser address bar shows <http://192.168.1.254/>. The main navigation menu includes 'Quick Start', 'Interface Setup', 'Advanced Setup', 'Access Management', 'Maintenance', 'Status', and 'Help'. The 'Quick Start' menu item is circled in red. Below the navigation menu, there are sub-menus for 'Device Info', 'System Log', and 'Statistics'. The main content area displays device information:

Section	Details
Device Information	Firmware Version: 2.7.0.11(ZUBO.B1)3.2.5 MAC Address: 0004 ed53 3006
LAN	IP Address: 192.168.1.254 Subnet Mask: 255.255.255.0 DHCP Server: Enabled
WAN	Virtual Circuit: <input type="text" value="PVC0"/> Status: Not Connected Connection Type: PPPoE IP Address: 0.0.0.0 Subnet Mask: 0.0.0.0 Default Gateway: 0.0.0.0 DNS Server: 0.0.0.0
ADSL	ADSL Firmware Ver: FwVer:3.2.2.5_A_T03094 HwVer:T14.F7_0.0 Line State: Down

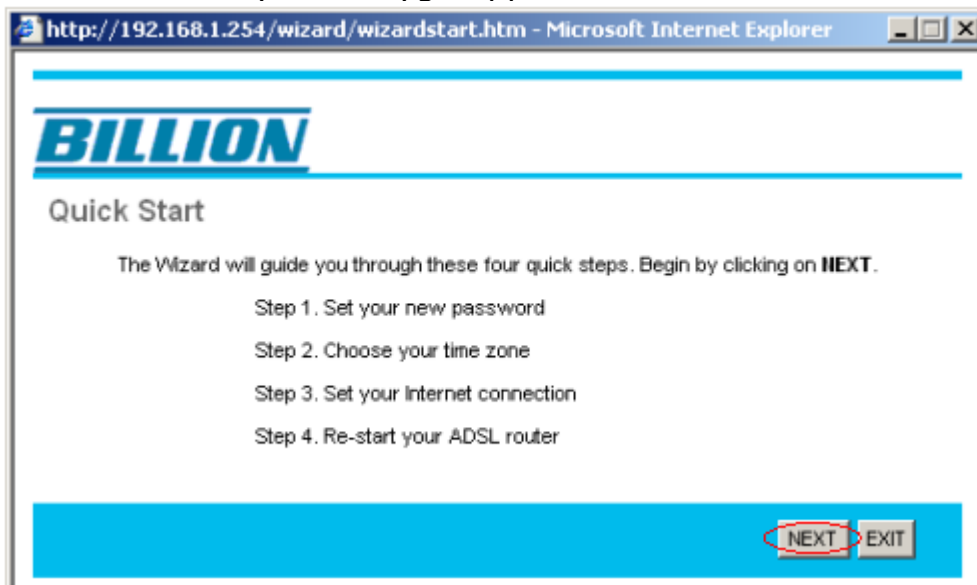
## Vel síðani RUN WIZARD

The screenshot shows the BILLION router web interface in Microsoft Internet Explorer. The browser address bar shows <http://192.168.1.254/>. The main navigation menu includes 'Quick Start', 'Interface Setup', 'Advanced Setup', 'Access Management', 'Maintenance', 'Status', and 'Help'. The 'Quick Start' menu item is highlighted. Below the navigation menu, there is a 'Quick Start' sub-menu. The main content area displays a message:

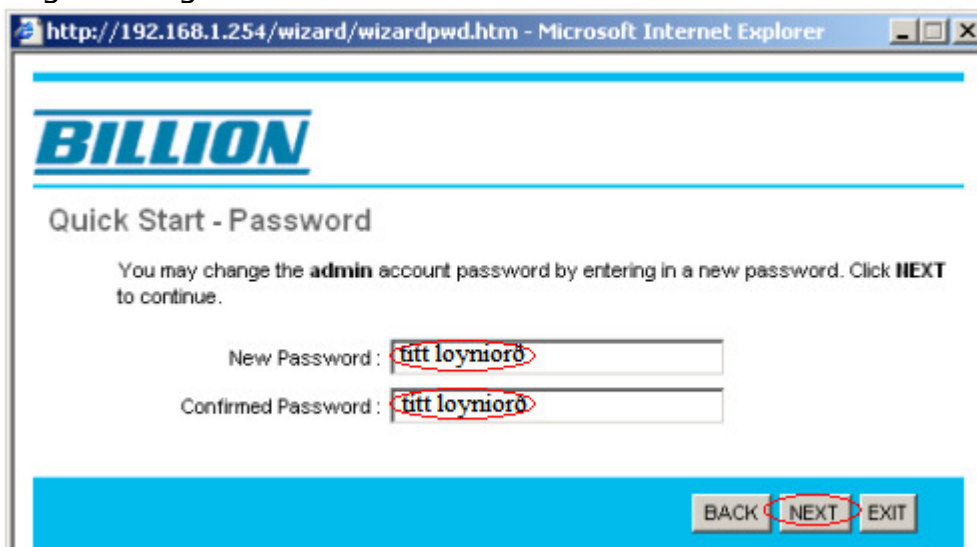
This ADSL Router is ideal for home networking and small business networking. The "Quick Start" wizard will guide you to configure the ADSL router to connect to your ISP (Internet Service Provider). The router's easy Quick Start will allow you to have Internet access within minutes. Please follow the "Quick Start" wizard step by step to configure the ADSL Router.

At the bottom of the page, there is a button labeled 'RUN WIZARD', which is circled in red.

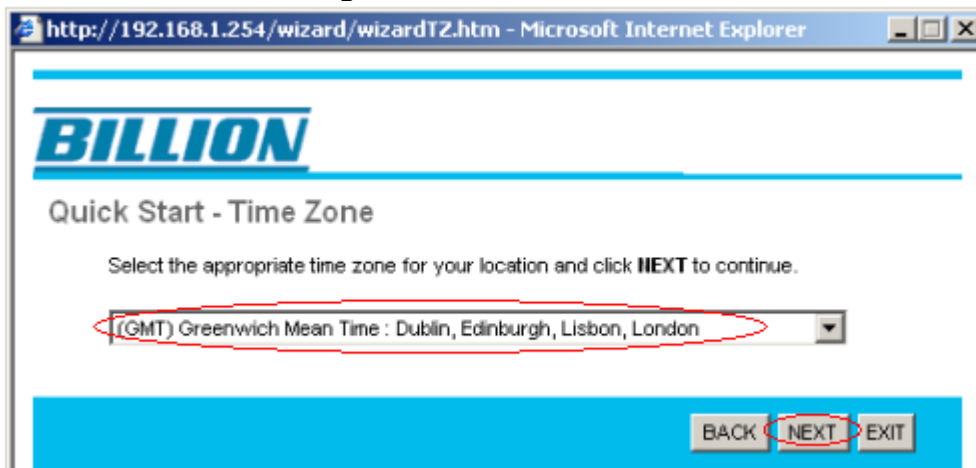
Nú kemur eitt nýtt vindeyga upp. Vel **NEXT**



Nú ber til at broyta upprunaloyrniorðið í móttaldinum, so eingin annar kann fara inn at broyta. Um upprunaloyrniorðið skal varðveitast, skriva **admin** í báðar teigarnar og vel **NEXT**.



Vel **GMT** í listanum og síðani **NEXT**



http://192.168.1.254/wizard/wizardTZ.htm - Microsoft Internet Explorer

# BILLION

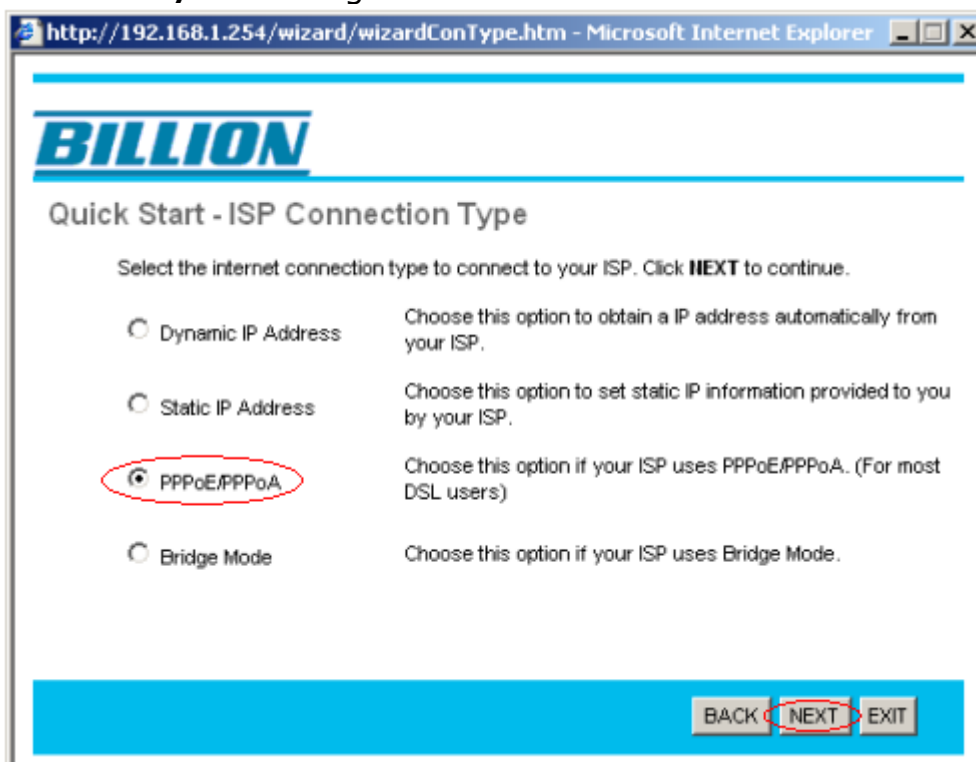
## Quick Start - Time Zone

Select the appropriate time zone for your location and click **NEXT** to continue.

(GMT) Greenwich Mean Time : Dublin, Edinburgh, Lisbon, London

BACK NEXT EXIT

Vel **PPPoE/PPPoA** og síðani **NEXT**



http://192.168.1.254/wizard/wizardConType.htm - Microsoft Internet Explorer

# BILLION

## Quick Start - ISP Connection Type

Select the internet connection type to connect to your ISP. Click **NEXT** to continue.

Dynamic IP Address Choose this option to obtain a IP address automatically from your ISP.

Static IP Address Choose this option to set static IP information provided to you by your ISP.

PPPoE/PPPoA Choose this option if your ISP uses PPPoE/PPPoA. (For most DSL users)

Bridge Mode Choose this option if your ISP uses Bridge Mode.

BACK NEXT EXIT

Skriva brúkaranavn og loyniorð, sum Føroya Tele hevur útflyggjað, í ávikavist **Username** og **Password**

set VPI til **1**

set VCI til **47**

set Connection Type til **PPPoA VC-Mux**

og síðani **Next**

http://192.168.1.254/wizard/wizardPPP.htm - Microsoft Internet Explorer

# BILLION

## Quick Start - PPPoE/PPPoA

Enter the PPPoE/PPPoA information provided to you by your ISP. Click **NEXT** to continue.

Username: dsl14xxxxx

Password: ●●●●●●

VPI: 1 (0~255)

VCI: 47 (1~65535)

Connection Type: PPPoA VC-Mux

BACK NEXT EXIT

Nú er uppsetingin næstan liðug.

Vel **NEXT** fyri at goyma og fara víðari ella **BACK**, um okkurt er skeivt ella skal broytast

http://192.168.1.254/wizard/wizardcomp.htm - Microsoft Internet Explorer

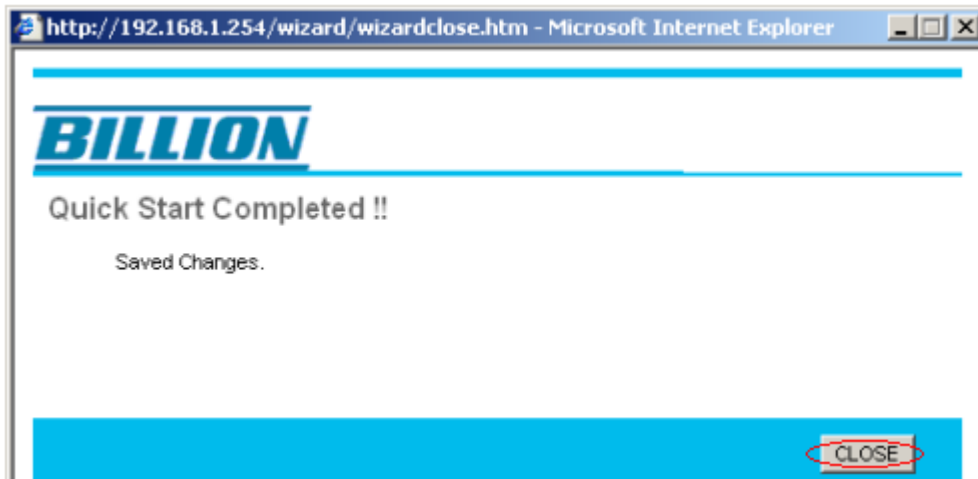
# BILLION

## Quick Start Complete !!

The Setup Wizard has completed. Click on **BACK** to modify changes or mistakes. Click **NEXT** to save the current settings.

BACK NEXT EXIT

Nú er ADSL-uppsetingin liðug. Vel **CLOSE**



**Nú er klárt at brúka breiðbandið**